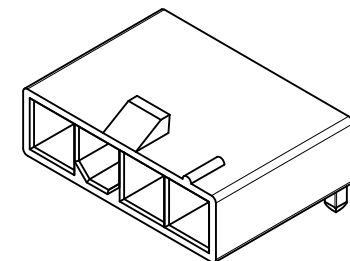
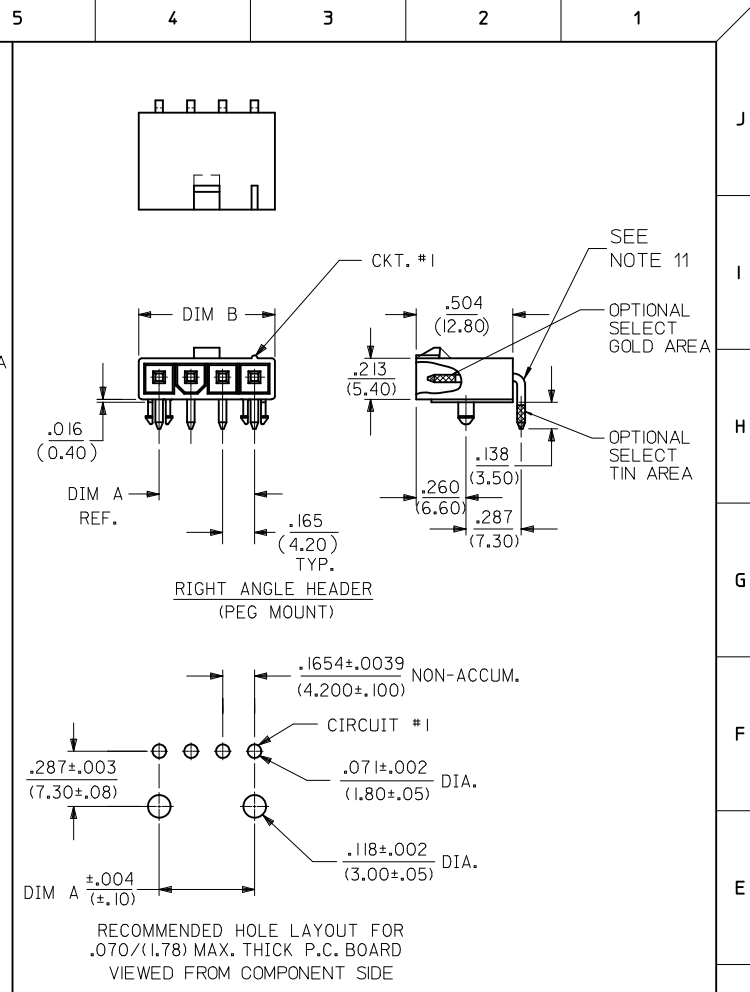
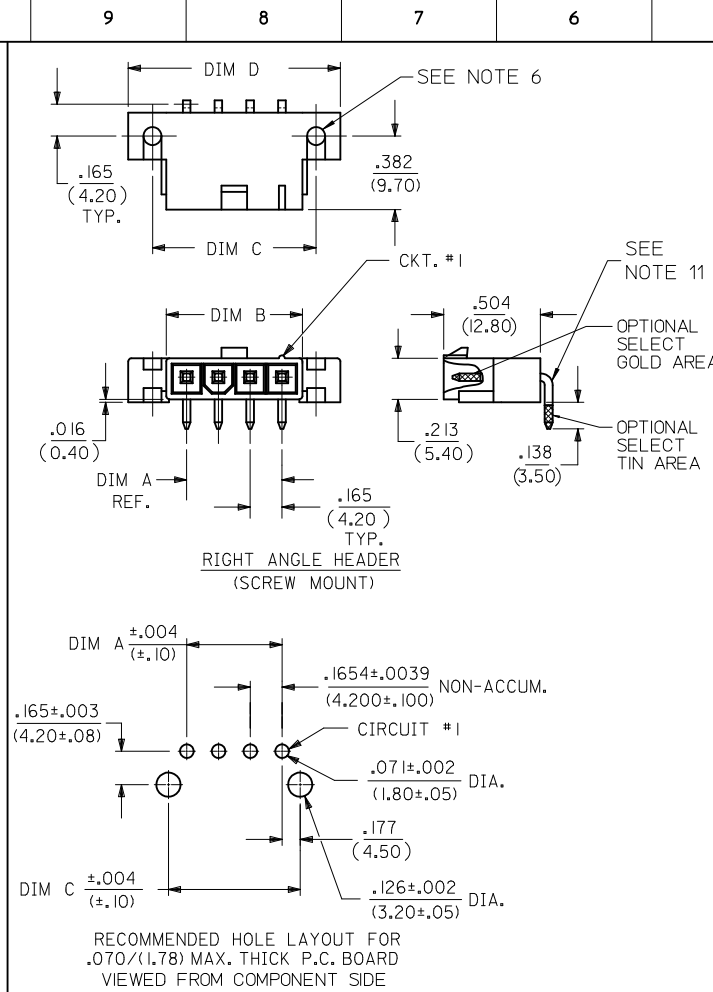


| CKT SIZE | DIM A | DIM B | DIM C | DIM D |
|----------|------------------|------------------|------------------|------------------|
| 4 | .496 (12.60) | .709 (18.00) | .850 (21.60) | 1.102 (28.00) |
| 5 | .661 (16.80) | .874 (22.20) | 1.016 (25.80) | 1.268 (32.20) |
| 6 | .827 (21.00) | 1.039 (26.40) | 1.181 (30.00) | 1.433 (36.40) |
| 7 | .992 (25.20) | 1.205 (30.60) | 1.346 (34.20) | 1.598 (40.60) |
| 8 | 1.157 (29.40) | 1.370 (34.80) | 1.512 (38.40) | 1.764 (44.80) |
| 9 | 1.323 (33.60) | 1.535 (39.00) | 1.677 (42.60) | 1.929 (49.00) |
| 10 | 1.488 (37.80) | 1.701 (43.20) | 1.843 (46.80) | 2.094 (53.20) |
| 11 | 1.654 (42.00) | 1.866 (47.40) | 2.008 (51.00) | 2.260 (57.40) |
| 12 | 1.819 (46.20) | 2.031 (51.60) | 2.173 (55.20) | 2.425 (61.60) |

NOTES:

- HOUSING MATERIAL:
 "BLANK" = NYLON 6/6, U.L. 94V-2, COLOR: NATURAL.
 210 = NYLON 6/6, U.L. 94V-0, COLOR: NATURAL.
 BL = NYLON 6/6, U.L. 94V-2, COLOR: BLACK.
 400 = NYLON 6/6, U.L. 94V-0, COLOR: BLACK.
 TERMINAL MATERIAL: BRASS, ALLOY.
- TERMINAL PLATING:
 G, GS - .000030/(.00076) MIN. SELECT GOLD AND .000100/(.00127) MIN. SELECT MATTE TIN OVER .000050/(.00127) MIN. NICKEL OVERALL.
 G2, GS2 - .00015/(.00038) MIN. SELECT GOLD AND .000100/(.00254) MIN. SELECT MATTE TIN OVER .000050/(.00127) MIN. NICKEL OVERALL.
 RM - .000060/(.00152) MIN. REFLOWED MATTE TIN OVER .000050/(.00127) MIN. NICKEL OVERALL.
- PRODUCT SPECIFICATION: PS-5556-001
- PACKAGING SPECIFICATION : BULK PACK PER PK-5569-002
- PART MATES WITH MOLEX RECEPTACLE #5557.
- PART IS DESIGNED FOR USE WITH 4 - 40 OR M3 SCREWS.
- DISCOLORATION IN THE BANDOLIER CARRIER AREA OF THE PIN IS INHERENT TO THE PLATING PROCESS AND IS DUE TO THE MASKING EFFECT OF THE CARRIER. THIS DISCOLORATION IS IN A NON-FUNCTIONAL AREA OF THE PIN AND WILL NOT AFFECT THE PERFORMANCE OF THE HEADER ASSEMBLY.
- CONNECTORS ARE NOT TO BE MATED OR UNMATED WHILE CIRCUIT ARE LIVE.
- PARTS NOT DESIGNED FOR CURRENT SHARING.
- PART CONFORMS TO CLASS "B" REQUIREMENTS OF COSMETIC SPECIFICATION PS-45499-002.
- FORMING MARKS ON PINS ARE ACCEPTABLE



LEGEND:

5569 - ** A * * - *

CKT. SIZE (04-12) →

ASSEMBLY →

MOUNTING & LOCK OPTION:
 3 = SCREW MOUNT, POSITIVE LOCK
 4 = PEG MOUNT, POSITIVE LOCK
 5 = PEG MOUNT, PASSIVE LOCK

PLATING OPTION:
 (SEE NOTE 2)

MATERIAL OPTION:
 (SEE NOTE 1)

| | | | | | | | | | |
|---|--------------------------------------|---------------------------------------|------|---|-----------------|---|------------------------|------------------------|--|
| CHANGE PLATING EC NO: UCP2012-0155 DRWINGUYEN 2011/07/21 CHKD:IBELL 2011/07/21 APPR:FSM/TH 2011/10/28 | QUALITY SYMBOLS ▽=0 ▽=0 ▽=0 | GENERAL TOLERANCES (UNLESS SPECIFIED) | | DIMENSION STYLE IN/MM | | SCALE 2:1 | DESIGN UNITS METRIC | THIRD ANGLE PROJECTION | |
| | | mm | INCH | DRAWN BY KSS | DATE 2/14/89 | TITLE RIGHT ANGLE HEADER ASSY (SINGLE ROW) (MINI-FIT JR. SERIES) | MOLEX INCORPORATED | | |
| | | 4 PLACES ± .015 | | CHECKED BY RJF | | DATE 2/14/89 | | | |
| | | 3 PLACES ± .015 | | APPROVED BY RAS | | DATE 2/14/89 | | | |
| | | 2 PLACES ± .015 | | MATERIAL NO. SEE CHARTS | | DOCUMENT NO. SDA-5569-NL* | | SHEET NO. 1 OF 2 | |
| | | 1 PLACE ± .015 | | DRAFT WHERE APPLICABLE MUST REMAIN WITHIN DIMENSIONS | | | | | |
| | | ANGULAR ± 3° | | THIS DRAWING CONTAINS INFORMATION THAT IS PROPRIETARY TO MOLEX INCORPORATED AND SHOULD NOT BE USED WITHOUT WRITTEN PERMISSION | | | | | |

| UL94V-2 | | | | | | |
|---------------------------|--------------|-----------|-----------------|-------------|----------------------|---------------------|
| E.D.P. NO. | ENG. NO. | CKT. SIZE | MOUNTING OPTION | LOCK OPTION | PLATING (SEE NOTE 2) | MAT'L. (SEE NOTE 1) |
| SCREW MOUNT POSITIVE LOCK | | | | | | |
| 39-30-3041 | 5569-04A3MS | 4 | SCREWS | POSITIVE | TIN/NICKEL | 94V-2 |
| 39-30-3051 | 5569-05A3MS | 5 | SCREWS | POSITIVE | TIN/NICKEL | 94V-2 |
| 39-30-6049 | 5569-04A3S | 4 | SCREWS | POSITIVE | TIN/NICKEL | 94V-2 |
| NO E.D.P. | 5569-05A3S | 5 | SCREWS | POSITIVE | TIN/NICKEL | 94V-2 |
| 39-30-3043 | 5569-04A3GS | 4 | SCREWS | POSITIVE | 30 GOLD | 94V-2 |
| 39-30-3053 | 5569-05A3GS | 5 | SCREWS | POSITIVE | 30 GOLD | 94V-2 |
| PEG MOUNT POSITIVE LOCK | | | | | | |
| 39-30-3045 | 5569-04A4 | 4 | PEGS | POSITIVE | TIN/NICKEL | 94V-2 |
| 39-30-3055 | 5569-05A4 | 5 | PEGS | POSITIVE | TIN/NICKEL | 94V-2 |
| 39-30-7041 | 5569-04A4S | 4 | PEGS | POSITIVE | TIN/NICKEL | 94V-2 |
| 39-30-7051 | 5569-05A4S | 5 | PEGS | POSITIVE | TIN/NICKEL | 94V-2 |
| 39-30-3047 | 5569-04A4G | 4 | PEGS | POSITIVE | 30 GOLD | 94V-2 |
| 39-30-3057 | 5569-05A4G | 5 | PEGS | POSITIVE | 30 GOLD | 94V-2 |
| 50-30-4438 | 5569-04A4GS | 4 | PEG | POSITIVE | 30 GOLD | 94V-2 |
| 50-30-4439 | 5569-05A4GS | 5 | PEG | POSITIVE | 30 GOLD | 94V-2 |
| PEG MOUNT, PASSIVE LOCK | | | | | | |
| NO E.D.P. | 5569-04A5MS | 4 | PEGS | PASSIVE | TIN/NICKEL | 94V-2 |
| 15-24-1501 | 5569-05A5MS | 5 | PEGS | PASSIVE | TIN/NICKEL | 94V-2 |
| NO E.D.P. | 5569-04A5GS2 | 4 | PEGS | PASSIVE | 15 GOLD | 94V-2 |
| 15-27-1501 | 5569-05A5GS2 | 5 | PEGS | PASSIVE | 15 GOLD | 94V-2 |

| UL94V-0 | | | | | | |
|---------------------------|-----------------|-----------|-----------------|-------------|----------------------|---------------------|
| E.D.P. NO. | ENG. NO. | CKT. SIZE | MOUNTING OPTION | LOCK OPTION | PLATING (SEE NOTE 2) | MAT'L. (SEE NOTE 1) |
| SCREW MOUNT POSITIVE LOCK | | | | | | |
| 50-30-4469 | 5569-04A3S-210 | 4 | SCREW | POSITIVE | TIN/NICKEL | 94V-0 |
| NO E.D.P. | 5569-05A3S-210 | 5 | SCREW | POSITIVE | TIN/NICKEL | 94V-0 |
| NO E.D.P. | 5569-04A3GS-210 | 4 | SCREW | POSITIVE | 30 GOLD | 94V-0 |
| NO E.D.P. | 5569-05A3GS-210 | 5 | SCREW | POSITIVE | 30 GOLD | 94V-0 |
| PEG MOUNT POSITIVE LOCK | | | | | | |
| 39-30-3046 | 5569-04A4MS-210 | 4 | PEGS | POSITIVE | TIN/NICKEL | 94V-0 |
| 39-30-3056 | 5569-05A4MS-210 | 5 | PEGS | POSITIVE | TIN/NICKEL | 94V-0 |
| 39-30-7042 | 5569-04A4S-210 | 4 | PEGS | POSITIVE | TIN/NICKEL | 94V-0 |
| 39-30-7052 | 5569-05A4S-210 | 5 | PEGS | POSITIVE | TIN/NICKEL | 94V-0 |
| 39-30-3048 | 5569-04A4G-210 | 4 | PEGS | POSITIVE | 30 GOLD | 94V-0 |
| 39-30-3058 | 5569-05A4G-210 | 5 | PEGS | POSITIVE | 30 GOLD | 94V-0 |
| 50-30-4441 | 5569-04A4GS-210 | 4 | PEG | POSITIVE | 30 GOLD | 94V-0 |
| 50-30-4442 | 5569-05A4GS-210 | 5 | PEG | POSITIVE | 30 GOLD | 94V-0 |
| NO E.D.P. | 5569-04A4GS-400 | 4 | PEG | POSITIVE | 30 GOLD | 94V-0 |
| 50-30-4436 | 5569-05A4GS-400 | 5 | PEG | POSITIVE | 30 GOLD | 94V-0 |
| 50-34-8578 | 5569-04A4RM-210 | 4 | PEGS | POSITIVE | REFLOW/NICKEL | 94V-0 |
| 50-34-8579 | 5569-05A4RM-210 | 5 | PEGS | POSITIVE | REFLOW/NICKEL | 94V-0 |

| SEE SHEET 1 EC NO: UCP2012-0155 DRW: NGUYEN 2011/07/21 CHKD: BELL 2011/07/21 APPR: FSM TH 2011/10/28 | QUALITY SYMBOLS | GENERAL TOLERANCES (UNLESS SPECIFIED) <table border="1"> <tr> <th></th> <th>mm</th> <th>INCH</th> </tr> <tr> <td>4 PLACES</td> <td>± .015</td> <td>± .0006</td> </tr> <tr> <td>3 PLACES</td> <td>± .015</td> <td>± .0006</td> </tr> <tr> <td>2 PLACES</td> <td>± .038</td> <td>± .0015</td> </tr> <tr> <td>1 PLACE</td> <td>± .076</td> <td>± .0030</td> </tr> </table> | | mm | INCH | 4 PLACES | ± .015 | ± .0006 | 3 PLACES | ± .015 | ± .0006 | 2 PLACES | ± .038 | ± .0015 | 1 PLACE | ± .076 | ± .0030 | DIMENSION STYLE IN/MM | SCALE DESIGN UNITS METRIC | THIRD ANGLE PROJECTION |
|---|--------------------------------------|--|--|----|------|----------|--------|---------|----------|--------|---------|----------|--------|---------|---------|--------|---------|---------------------------------|--|----------------------------|
| | | mm | INCH | | | | | | | | | | | | | | | | | |
| | 4 PLACES | ± .015 | ± .0006 | | | | | | | | | | | | | | | | | |
| | 3 PLACES | ± .015 | ± .0006 | | | | | | | | | | | | | | | | | |
| 2 PLACES | ± .038 | ± .0015 | | | | | | | | | | | | | | | | | | |
| 1 PLACE | ± .076 | ± .0030 | | | | | | | | | | | | | | | | | | |
| DRAWN BY KSS DATE 2/14/89 | CHECKED BY RJF DATE 2/14/89 | APPROVED BY RAS DATE 2/14/89 | TITLE RIGHT ANGLE HEADER ASSY (SINGLE ROW) (MINI-FIT JR. SERIES) | | | | | | | | | | | | | | | | | |
| MATERIAL NO. SEE TABLE | | | DOCUMENT NO. SDA-5569-NL* | | | | | | | | | | | | | | | | | |
| DRAFT WHERE APPLICABLE MUST REMAIN WITHIN DIMENSIONS | | | SHEET NO. 2 OF 2 | | | | | | | | | | | | | | | | | |