

APPLICATION		REVISIONS		
NEXT ASSY	USED ON	DESCRIPTION	DATE	APPROVED

PICO PART# 24AV700

ELECTRICAL CHARACTERISTICS

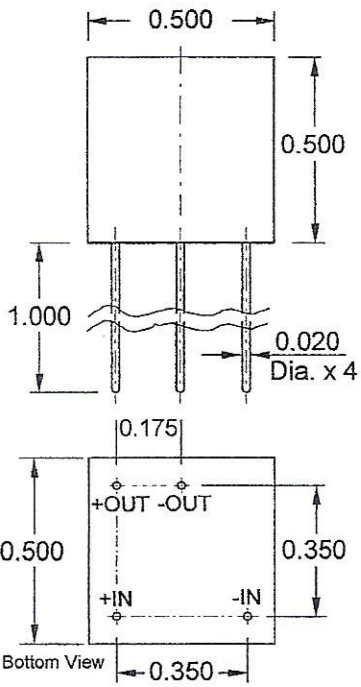
Test Conditions: 25°C ambient

INPUT VOLTAGE	:	24 VDC
INPUT VOLTAGE RANGE	:	±10%
OUTPUT VOLTAGE	:	700 VDC
(Output Voltage is directly proportional to the input voltage)		
OUTPUT VOLTAGE TOLERANCE @ FULL LOAD	:	±3%
MAX. LOAD CURRENT	:	1.79 mA
(10% minimum load always required across output)		
MAX. OUTPUT POWER	:	1.25 W
TYPICAL FULL LOAD EFFICIENCY	:	70%
TYPICAL INPUT CURRENT @ FULL LOAD	:	74 mA
MAX. OUTPUT VOLTAGE RIPPLE	:	3.0V p-p
(Output Voltage Ripple Measured with a 0.01uF/3000V Capacitor required Across Output)		
STORAGE TEMPERATURE	:	-55°C to +125°C
OPERATING TEMPERATURE	:	-25°C to +70°C
ISOLATION	:	100 megohms at 1,500 VDC

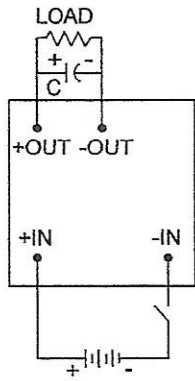
All readings taken at nominal input and full load.

MEETS THE FOLLOWING BY DESIGN:

- VIBRATION:** PER MIL-STD-202, METHOD 204, CONDITION D
- HUMIDITY:** PER MIL-STD 202, METHOD 106
- SHOCK:** PER MIL-STD-202, METHOD 213, CONDITION I
- ALTITUDE:** PER MIL-STD-202, METHOD 105, CONDITION D



Notes: All dimensions are in inches
White Dot on top of the unit indicates +Input
Typical Weight: 5 Grams



C = 0.01uF, 3000 VDC

UNLESS OTHERWISE SPECIFIED
DIMENSIONS ARE IN INCHES
TOLERANCES ON
FRAC. DEC. ANGLES

DRAWING STARTED	DATE
DRAWN	
CHECKED	
ENGR	

MATERIAL:

FINISH:

Pico Electronics, Inc.
143 SPARKS AV. PELHAM, NEW YORK., 10803-1837

ALTEST CORP.

SIZE	CODE IDENT NO.	P.N.
A		
SCALE		SHEET