

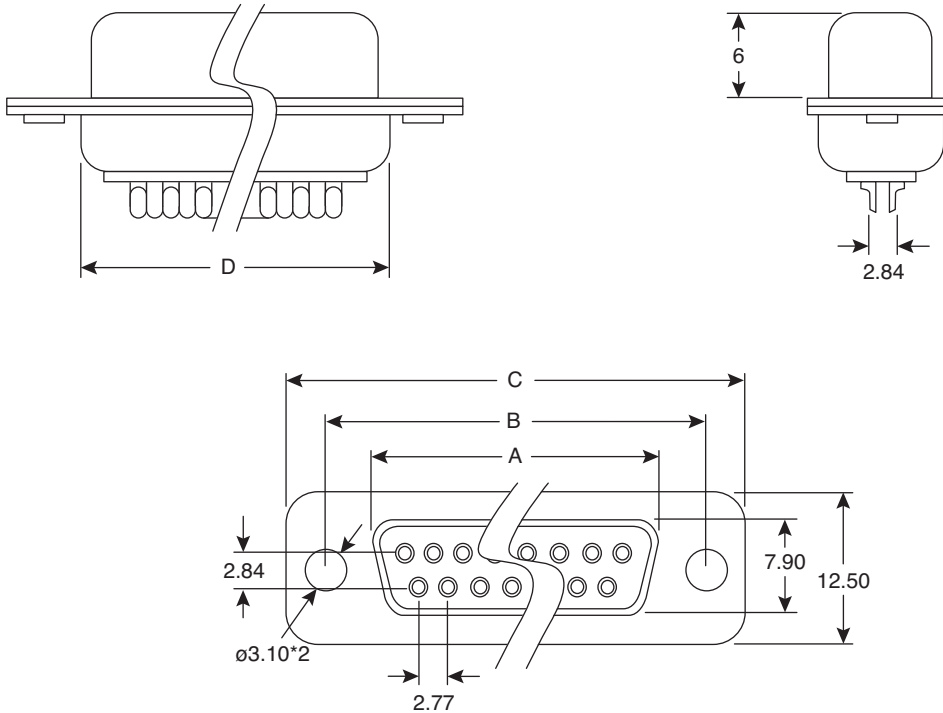
# D-Sub Connectors Female

156-1309T-E, 156-1315T-E,  
156-1325T-E, 156-1337T-E



D-Sub Connectors Female

156-1309T-E, 156-1315T-E, 156-1325T-E, 156-1337T-E



MOUSER STOCK NO.	Position	A	B	C	D
156-1309T-E	9F	16.30	25.00	30.80	19.20
156-1315T-E	15F	24.60	33.30	39.20	27.70
156-1325T-E	25F	38.30	47.10	53.10	41.10
156-1337T-E	37F	54.80	63.50	69.40	57.30

Dimensions: mm

MATERIAL SPECIFICATIONS	
<b>Insulator:</b>	Thermal Plastic
<b>Contacts:</b>	Copper Alloy
<b>Shell:</b>	Steel
<b>Rivet, Boardlock:</b>	Copper Alloy, Contact Plating
<b>Underplated:</b>	50μ"~100μ" Nickel
<b>Contact Area:</b>	1μ"~50μ" Selective Gold
<b>Solder Tails Area:</b>	100μ"~200μ" Tin/Lead (Brighten Tin) or 100μ"~200μ" Tin/Lead Free (Brighten Tin/Matte Tin)

ELECTRICAL SPECIFICATIONS	
<b>Operation Voltage:</b>	250 VAC Max.
<b>Current Rating:</b>	3 Amps Max.
<b>Contact Resistance:</b>	15 mΩ Max.
<b>Insulation Resistance:</b>	3000 MΩ Min. @ 500 VDC
<b>Dielectric Withstanding Voltage:</b>	1000 VAC / Minute
<b>Temperature Range:</b>	-55°C +105°C
<b>RoHS Compliant</b>	

Date Last Revised: 6-13-12

**Available from Mouser Electronics**  
1-800-346-6873 / [www.mouser.com](http://www.mouser.com)

KC-301312

Specifications are subject to change without notice. No liability or warranty implied by this information. Environmental compliance based on producer documentation.

# Mouser Electronics

Authorized Distributor

Click to View Pricing, Inventory, Delivery & Lifecycle Information:

[Kobiconn:](#)

[156-1315T-E](#) [156-1337T-E](#) [156-1309T-E](#) [156-1325T-E](#)